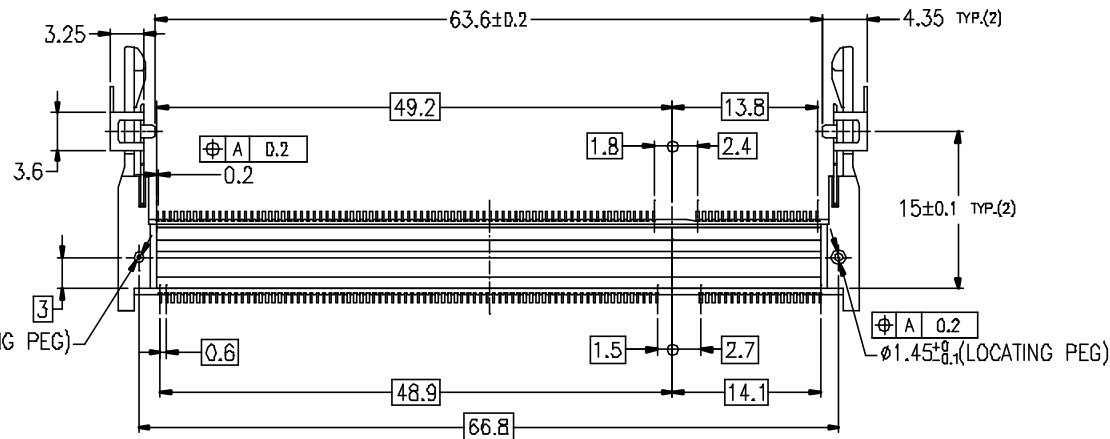
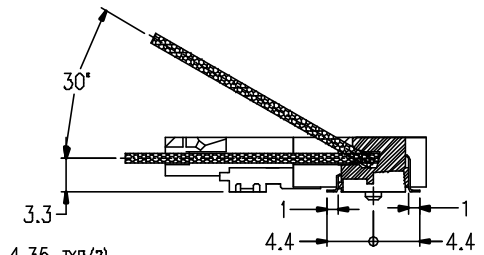
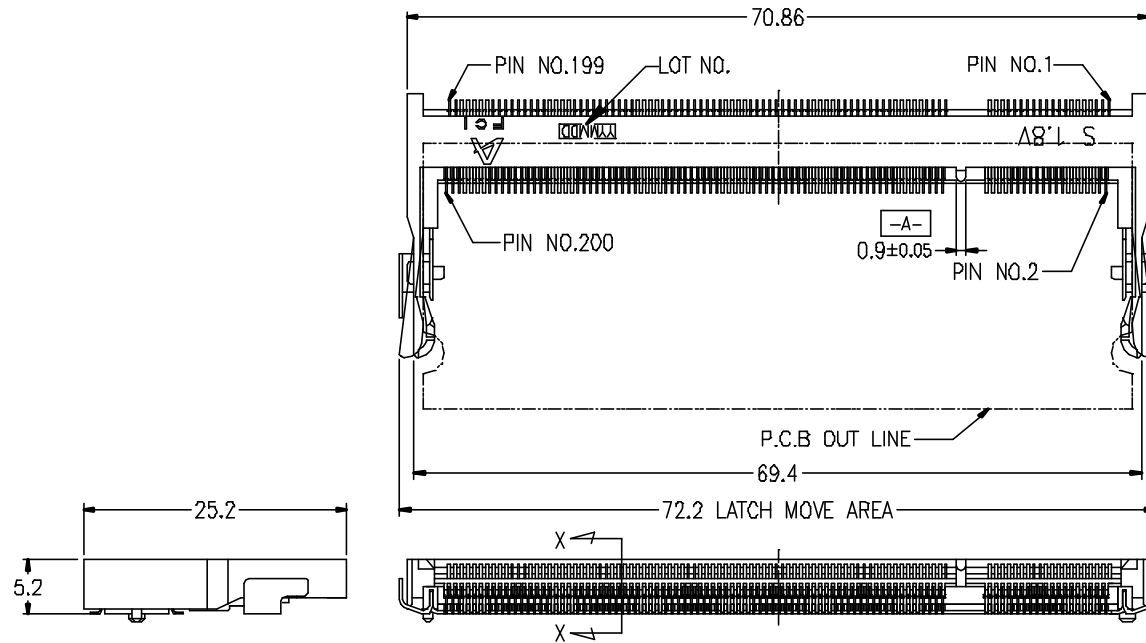


PRODUCT NO.
10033853-*52**

REVISIONS				
REV	DESCRIPTION	ECN	BY	DATE
1	SKETCHED		M.H	8/28/03
2	REVISED		M.H	4/2/04
3	REVISED		M.H	6/29/04
4	REVISED		M.H	9/28/04
A	RELEASED	J04-0401	M.H	11/9/04
B	RELEASED	T05-0022	R.C	01/27/05
C	RELEASED	T05-0229	R.C	10/12/05



- NOTE
1. PRODUCT SPEC. : GS-12-195
 2. PACKAGING SPEC. : GS-14-786
 3. MATERIAL
 - 1) HOUSING : LCP, UL94V-0, COLOR BLACK
 - 2) CONTACT : COPPER ALLOY
 - 3) HOLD DOWN : BRASS
 4. FINISH
 - 1) TERMINAL : SEE TABLE
 - 2) HOLD DOWN : SEE TABLE
 5. CO-PLANARITY : 0.1 MAX.(INCLUDE HOLD DOWN)
 6. THIS PRODUCT MEETS EUROPEAN UNION DIRECTIVES AND OTHER COUNTRY REGULATIONS AS DESCRIBED IN GS-22-008.
 7. THE HOUSING WILL WITHSTAND EXPOSURE TO 260° PEAK TEMPERATURE FOR 10 SECONDS IN A WAVE SOLDER APPLICATION.

SHEET INDEX	ISSUE	C	C	A	B										
	SH NO.	1	2	3	4										
LINEAR	TOLERANCES UNLESS OTHERWISE SPECIFIED				MAT		DR	DATE	CUSTOMER COPY	TITLE					
	±0.3				SEE NOTE		M. Hasegawa	4/20/04		DDR II 0.6 mm PITCH 200 POS. STANDARD TYPE ASS'Y					
ANGLES					FINISH		ENGR		THIRD ANGLE PROJ	PRODUCT FAMILY			CODE JP		
	±2°				SEE NOTE		M. Hasegawa	4/4/04		50UF SO-DIMM			JP		
		UNIT				APPD		SCALE	SIZE	DWG. NO.	REV	SHEET			
		MM						2/1	B	10033853	C	1 of 4			

FCI

TITLE: DDR II 0.6 mm PITCH 200 POS. STANDARD TYPE ASS'Y

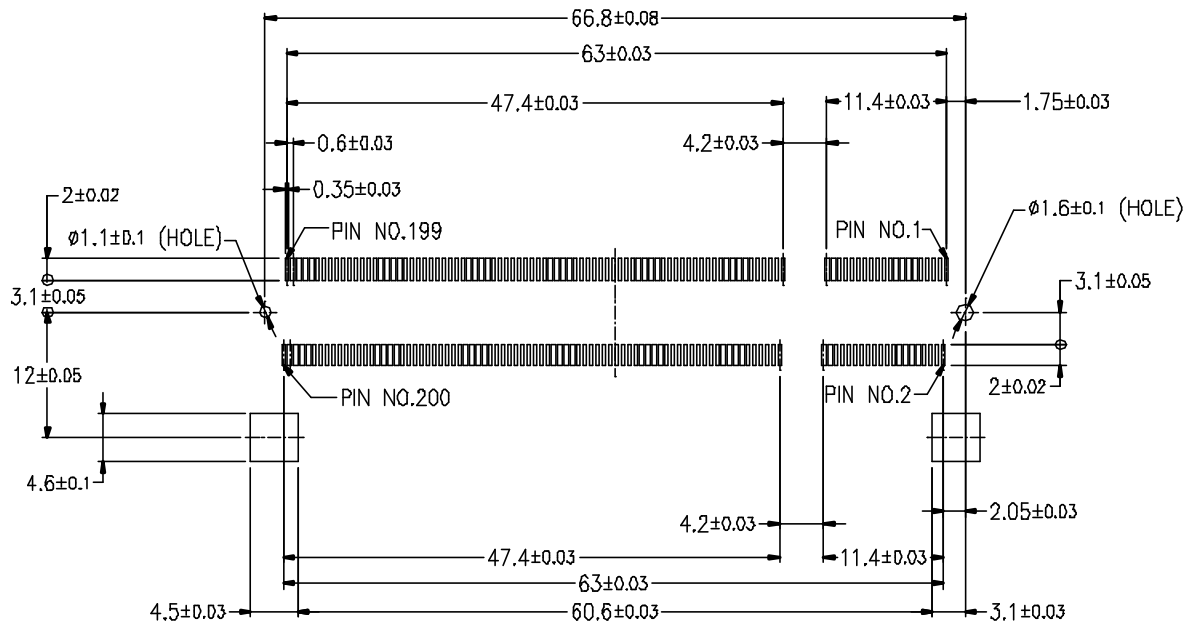
PRODUCT FAMILY: 50UF SO-DIMM

SCALE: 2/1 SIZE: B DWG. NO.: 10033853 REV: C SHEET: 1 of 4


DO NOT SCALE PRINT THIS INFORMATION IS CONFIDENTIAL AND IS DISCLOSED TO YOU ON CONDITION THAT NO FURTHER DISCLOSURE IS MADE BY YOU TO OTHER THAN FCI PERSONNEL WITHOUT WRITTEN AUTHORIZATION FROM FCI JAPAN K.K.

PRODUCT NO.
10033853-52**

REVISIONS				
REV	DESCRIPTION	ECN	BY	DATE
1	SKETCHED		M.H	8/28/'03
2	REVISED		M.H	4/2/'04
3	REVISED		M.H	6/29/'04
A	RELEASED	J04-0401	M.H	11/9/'04
C	RELEASED	T05-0229	R.C	10/12/05'



RECOMMENDED MOUNTING P.C.B LAYOUT



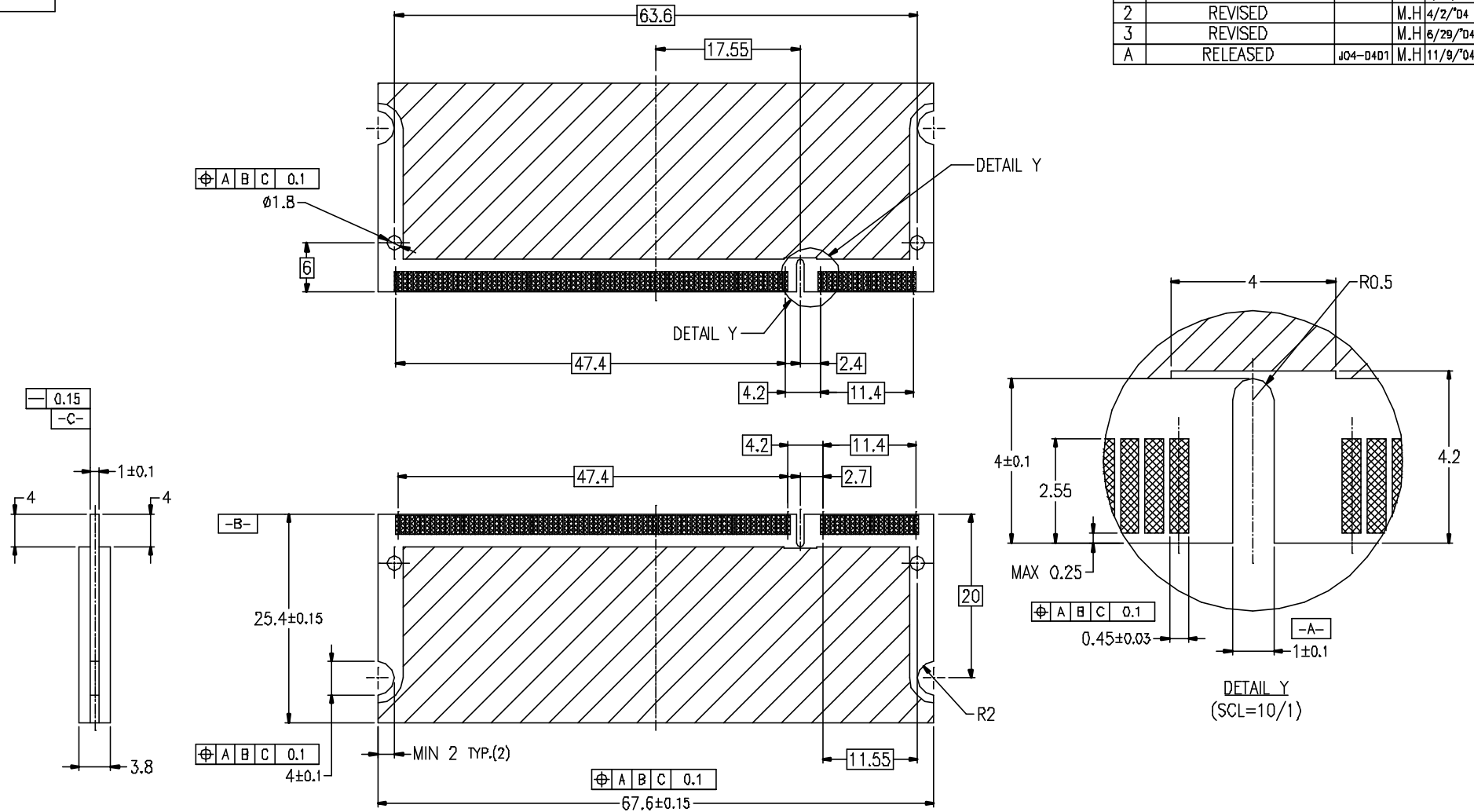
FCI

SHEET INDEX		ISSUE SH NO.		MAT		DR <i>M.Hasegawa</i>	DATE 8/28/03	CUSTOMER COPY	TITLE DDR II 0.6 mm PITCH 200 POS. STANDARD TYPE ASS'Y		CODE JP
LINEAR		TOLERANCES UNLESS OTHERWISE SPECIFIED ±0.3		FINISH		ENGR <i>M.Hasegawa</i>	DATE 6/29/04	THIRD ANGLE PROJ	PRODUCT FAMILY SOUF SO-DIMM		SHEET 2 of 2
ANGLES		±2°		APPD		UNIT MM INCH			SCALE 2/1	SIZE B	
DO NOT SCALE PRINT THIS INFORMATION IS CONFIDENTIAL AND IS DISCLOSED TO YOU ON CONDITION THAT NO FURTHER DISCLOSURE IS MADE BY YOU TO OTHER THAN FCI PERSONNEL WITHOUT WRITTEN AUTHORIZATION FROM FCI JAPAN K.K.									REV C	SHEET 2 of 2	

DO NOT SCALE PRINT THIS INFORMATION IS CONFIDENTIAL AND IS DISCLOSED TO YOU ON CONDITION THAT NO FURTHER DISCLOSURE IS MADE BY YOU TO OTHER THAN FCI PERSONNEL WITHOUT WRITTEN AUTHORIZATION FROM FCI JAPAN K.K.

PRODUCT NO.
10033853-*52**

REVISIONS				
REV	DESCRIPTION	ECN	BY	DATE
1	SKETCHED		M.H	8/28/'03
2	REVISED		M.H	4/2/'04
3	REVISED		M.H	6/29/'04
A	RELEASED	J04-D401	M.H	11/9/'04



RECOMMENDED MODULE P.C.B. LAYOUT

A	
FCI	
TITLE DDR II 0.6 mm PITCH 200 POS. STANDARD TYPE ASSY	
PRODUCT FAMILY	CODE JP
50UF SO-DIMM	
SCALE	REV
2/1	A
SIZE	SHEET
B	30F
DWG. NO.	
10033853	

SHEET INDEX	ISSUE SH NO.	MAT	DR	DATE	CUSTOMER COPY	TITLE
			<i>M.Hasegawa</i>	4/20/04		DDR II 0.6 mm PITCH 200 POS. STANDARD TYPE ASSY
	TOLERANCES UNLESS OTHERWISE SPECIFIED		ENGR			PRODUCT FAMILY
	±0.3		<i>M.Hasegawa</i>	4/20/04		50UF SO-DIMM
LINEAR		FINISH	CHK		THIRD ANGLE PROJ	SCALE
						2/1
ANGLES			APPD		UNIT	SIZE
	±2°				MM	B
					INCH	DWG. NO.
						10033853

DO NOT SCALE PRINT THIS INFORMATION IS CONFIDENTIAL AND IS DISCLOSED TO YOU ON CONDITION THAT NO FURTHER DISCLOSURE IS MADE BY YOU TO OTHER THAN FCI PERSONNEL WITHOUT WRITTEN AUTHORIZATION FROM FCI JAPAN K.K.
DF-004A REV F

REVISIONS				
REV	DESCRIPTION	ECN	BY	DATE
1	SKETCHED		M.H	6/29/'04
A	RELEASED	JD4-0401	M.H	11/9/'04
B	RELEASED	T05-0022	R.C	01/27/05'

PRODUCT NO.	LOCATING PEG	TERMINAL CONTACT AREA FINISH	HOLD DOWN FINISH	SOLDER TAIL FINISH
10033853-052FSLF	YES	Au FLASH	PURE Sn PLATING	Au FLASH
10033853-152FSLF	NO			
10033853-052TSLF	YES	Au 0.3um MIN.		
10033853-152TSLF	NO			
10033853-052ASLF	YES	Au 0.76um MIN.		
10033853-152ASLF	NO			
10033853-052FB	YES	Au FLASH	Sn-Pb PLATING	
10033853-152FB	NO			
10033853-052TB	YES	Au 0.3um MIN.		
10033853-152TB	NO			
10033853-052AB	YES	Au 0.76um MIN.		
10033853-152AB	NO			
10033853-252FSLF	YES	Au FLASH	PURE Sn PLATING	Pure Sn PLATING
10033853-352FSLF	NO			
10033853-252TSLF	YES	Au 0.3um MIN.		
10033853-352TSLF	NO			
10033853-252ASLF	YES	Au 0.76um MIN.		
10033853-352ASLF	NO			
10033853-252FB	YES	Au FLASH	Sn-Pb PLATING	
10033853-352FB	NO			
10033853-252TB	YES	Au 0.3um MIN.		
10033853-352TB	NO			
10033853-252AB	YES	Au 0.76um MIN.		
10033853-352AB	NO			
10033853-452FS	YES	Au FLASH	PURE Sn PLATING	Sn-Pb PLATING
10033853-552FS	NO			
10033853-452TS	YES	Au 0.3um MIN.		
10033853-552TS	NO			
10033853-452AS	YES	Au 0.76um MIN.		
10033853-552AS	NO			
10033853-452FB	YES	Au FLASH	Sn-Pb PLATING	
10033853-552FB	NO			
10033853-452TB	YES	Au 0.3um MIN.		
10033853-552TB	NO			
10033853-452AB	YES	Au 0.76um MIN.		
10033853-552AB	NO			

10033853-□□□□ LF

<HOLD DOWN FINISH>
S : Pure Sn
B : Sn-Pb
<CONTACT AREA FINISH>
F : Au FLASH
T : Au 0.3um MIN.
A : Au 0.76um MIN.
<TOTAL HEIGHT>
52 : 5.2mm

<LOCATING PEG, SOLDER TAIL FINISH>
0 : YES, Au FLASH
1 : NO, Au FLASH
2 : YES, Pure Sn PLATING
3 : NO, Pure Sn PLATING
4 : YES, Sn-Pb PLATING
5 : NO, Sn-Pb PLATING

For Rohs OPTIONS:
TAIL PLATING CODE MUST BE 0~3.
HOLD DOWN PLATING CODE MUST BE "S".
"LF" CODE IS EXIST IN THE END.
EX: 10033853-252TSLF

FOR NOT Rohs COMPATIBLE:
THIS "LF" CODE IS "BLANK".
EX:10033853-452TS



SHEET INDEX	ISSUE SH NO.										
TOLERANCES UNLESS OTHERWISE SPECIFIED		MAT	DR	DATE	CUSTOMER COPY	TITLE					
±0.3		—	M.Hasegawa	4/29/04		DDR II 0.6 mm PITCH 200 POS. STANDARD TYPE ASSY					
LINEAR		FINISH	ENGR			PRODUCT FAMILY		CODE JP			
		—	M.Hasegawa	4/29/04		50UF SO-DIMM		SHEET			
ANGLES	±2°		CHK		THIRD ANGLE PROJ	SCALE	SIZE	DWG. NO.	REV		
			APPD		UNIT	2/1	B	10033853	B	40F	

DO NOT SCALE PRINT THIS INFORMATION IS CONFIDENTIAL AND IS DISCLOSED TO YOU ON CONDITION THAT NO FURTHER DISCLOSURE IS MADE BY YOU TO OTHER THAN FCI PERSONNEL WITHOUT WRITTEN AUTHORIZATION FROM FCI JAPAN K.K.